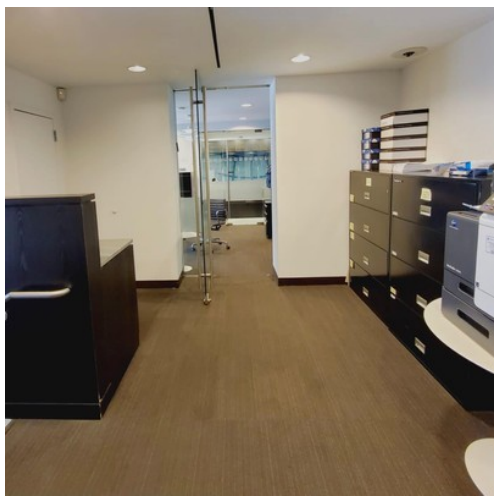




**BOROUGH PARK RETAIL SPACE**

**RETAIL BANK  
BRANCH FOR  
RENT**

This 3,500 square foot fully built retail bank branch located at 5101 13th Avenue, Brooklyn New York. This is a major shopping district located in the Borough Park / New Utrecht Area. The bank branch was rented to Metropolitan Commercial Bank. The bank branch is available with a new lease directly from the landlord. The landlord will provide you with some free rent for ample time to build your team and file the required documents with regulatory agencies for your new branch location. The monthly rent is \$20,400 per month. In addition, there is an estimated 2,500 usable square feet located below street level.



New York Residence Inc. 1501 Broadway, Suite 2600, New York, NY 10036 [www.nyr.com](http://www.nyr.com)

Richard Pino  
Chief Financial Officer/ Associate Broker

O: (212)360-7000 ext.100  
M: (917)209-7862

Email: [rpino@nyr.com](mailto:rpino@nyr.com)